

Leveling Sets

Steel / Stainless Steel

SPECIFICATION

Types

- Type **A**: Without lock nut
- Type **B**: With lock nut

Version in Steel

Steel **ST**
zinc plated, blue passivated

Version in Stainless Steel NI

Stainless Steel AISI 304

INFORMATION

Leveling Sets GN 360 are used for leveling and to compensate for any slope when setting up machines and systems.

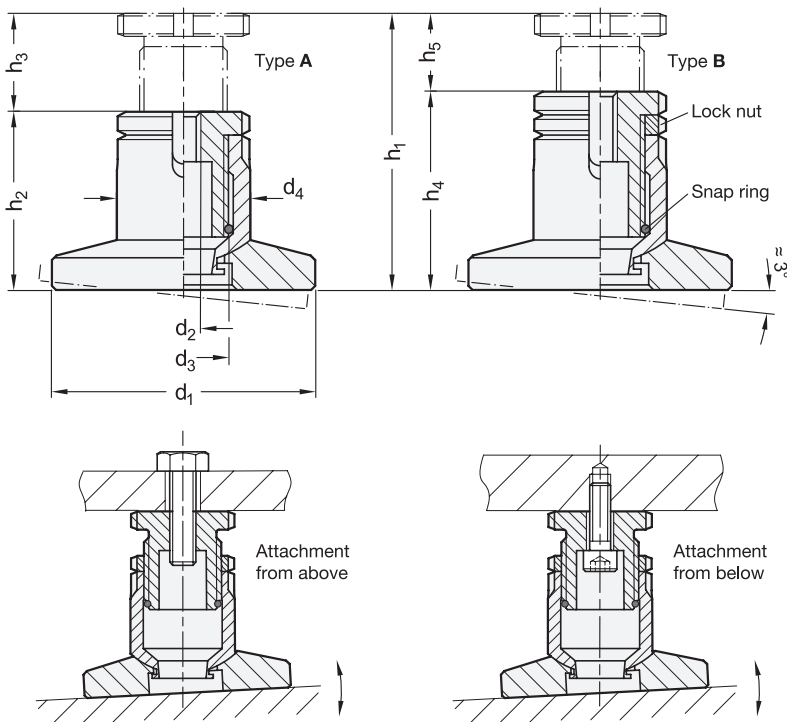
The thread d_2 can also be used as a through-hole for attachment from below. The fine thread d_3 laws precise adjustment and readjustment using a DIN 1810 (see page 994) C-Spanner. A circlip limits the maximum path of adjustment.

ACCESSORY

- C-Spanner DIN 1810 (see page 994) (code no. see table)

TECHNICAL INFORMATION

- Stainless Steel characteristics (see page A26)



GN 360

Description	d1 Support plate d1 = d4	d1 Support plate d1 > d4	d2	h1 max.	d3	d4	h2 min.	h3 Adjustable range	h4 min.	h5 Adjustable range	Static load F in kN	Code no. C-Spanner	⚖
GN 360-40-M10-69-A-ST	40	-	M 10	69	M 28 x 1.5	40	53	16	-	-	100	DIN 1810-A40-42	390
GN 360-40-M10-86-A-ST	40	-	M 10	86	M 28 x 1.5	40	62	24	-	-	100	DIN 1810-A40-42	460
GN 360-79-M10-69-A-ST	-	79	M 10	69	M 28 x 1.5	40	53	16	-	-	100	DIN 1810-A40-42	730
GN 360-79-M10-86-A-ST	-	79	M 10	86	M 28 x 1.5	40	62	24	-	-	100	DIN 1810-A40-42	815
GN 360-52-M12-80-A-ST	52	-	M 12	80	M 36 x 1.5	52	61	19	-	-	125	DIN 1810-A52-55	825
GN 360-52-M12-103-A-ST	52	-	M 12	103	M 36 x 1.5	52	73	30	-	-	125	DIN 1810-A52-55	975
GN 360-99-M12-80-A-ST	-	99	M 12	80	M 36 x 1.5	52	61	19	-	-	125	DIN 1810-A52-55	1425
GN 360-99-M12-103-A-ST	-	99	M 12	103	M 36 x 1.5	52	73	30	-	-	125	DIN 1810-A52-55	1595
GN 360-65-M16-112-A-ST	65	-	M 16	112	M 45 x 1.5	65	82	30	-	-	225	DIN 1810-A65-70	1665
GN 360-65-M16-148-A-ST	65	-	M 16	148	M 45 x 1.5	65	100	48	-	-	225	DIN 1810-A65-70	2048
GN 360-119-M16-112-A-ST	-	119	M 16	112	M 45 x 1.5	65	82	30	-	-	225	DIN 1810-A65-70	2880
GN 360-119-M16-148-A-ST	-	119	M 16	148	M 45 x 1.5	65	100	48	-	-	225	DIN 1810-A65-70	3260
GN 360-40-M10-69-B-ST	40	-	M 10	69	M 28 x 1.5	40	-	-	59	10	100	DIN 1810-A40-42	418
GN 360-40-M10-86-B-ST	40	-	M 10	86	M 28 x 1.5	40	-	-	68	18	100	DIN 1810-A40-42	480
GN 360-79-M10-69-B-ST	-	79	M 10	69	M 28 x 1.5	40	-	-	59	10	100	DIN 1810-A40-42	755
GN 360-79-M10-86-B-ST	-	79	M 10	86	M 28 x 1.5	40	-	-	68	18	100	DIN 1810-A40-42	840
GN 360-52-M12-80-B-ST	52	-	M 12	80	M 36 x 1.5	52	-	-	69	11	125	DIN 1810-A52-55	897
GN 360-52-M12-103-B-ST	52	-	M 12	103	M 36 x 1.5	52	-	-	80	23	125	DIN 1810-A52-55	1460
GN 360-99-M12-80-B-ST	-	99	M 12	80	M 36 x 1.5	52	-	-	69	11	125	DIN 1810-A52-55	1498
GN 360-99-M12-103-B-ST	-	99	M 12	103	M 36 x 1.5	52	-	-	80	23	125	DIN 1810-A52-55	1645
GN 360-65-M16-112-B-ST	65	-	M 16	112	M 45 x 1.5	65	-	-	90	22	225	DIN 1810-A65-70	1758
GN 360-65-M16-148-B-ST	65	-	M 16	148	M 45 x 1.5	65	-	-	108	40	225	DIN 1810-A65-70	2145
GN 360-119-M16-112-B-ST	-	119	M 16	112	M 45 x 1.5	65	-	-	90	22	225	DIN 1810-A65-70	2980
GN 360-119-M16-148-B-ST	-	119	M 16	148	M 45 x 1.5	65	-	-	108	40	225	DIN 1810-A65-70	3360

GN 360-NI

STAINLESS STEEL

Description	d1 Support plate d1 = d4	d1 Support plate d1 > d4	d2	h1 max.	d3	d4	h2 min.	h3 Adjustable range	h4 min.	h5 Adjustable range	Static load F in kN	Code no. C-Spanner	⚖
GN 360-40-M10-69-A-NI	40	-	M 10	69	M 28 x 1.5	40	53	16	-	-	70	DIN 1810-A40-42	390
GN 360-40-M10-86-A-NI	40	-	M 10	86	M 28 x 1.5	40	62	24	-	-	70	DIN 1810-A40-42	460
GN 360-79-M10-69-A-NI	-	79	M 10	69	M 28 x 1.5	40	53	16	-	-	70	DIN 1810-A40-42	730
GN 360-79-M10-86-A-NI	-	79	M 10	86	M 28 x 1.5	40	62	24	-	-	70	DIN 1810-A40-42	825
GN 360-52-M12-80-A-NI	52	-	M 12	80	M 36 x 1.5	52	61	19	-	-	85	DIN 1810-A52-55	815
GN 360-52-M12-103-A-NI	52	-	M 12	103	M 36 x 1.5	52	73	30	-	-	85	DIN 1810-A52-55	975
GN 360-99-M12-80-A-NI	-	99	M 12	80	M 36 x 1.5	52	61	19	-	-	85	DIN 1810-A52-55	1425
GN 360-99-M12-103-A-NI	-	99	M 12	103	M 36 x 1.5	52	73	30	-	-	85	DIN 1810-A52-55	1595
GN 360-65-M16-112-A-NI	65	-	M 16	112	M 45 x 1.5	65	82	30	-	-	155	DIN 1810-A65-70	1665
GN 360-65-M16-148-A-NI	65	-	M 16	148	M 45 x 1.5	65	100	48	-	-	155	DIN 1810-A65-70	2048
GN 360-119-M16-112-A-NI	-	119	M 16	112	M 45 x 1.5	65	82	30	-	-	155	DIN 1810-A65-70	2880
GN 360-119-M16-148-A-NI	-	119	M 16	148	M 45 x 1.5	65	100	48	-	-	155	DIN 1810-A65-70	3260
GN 360-40-M10-69-B-NI	40	-	M 10	69	M 28 x 1.5	40	-	-	59	10	70	DIN 1810-A40-42	418
GN 360-40-M10-86-B-NI	40	-	M 10	86	M 28 x 1.5	40	-	-	68	18	70	DIN 1810-A40-42	480
GN 360-79-M10-69-B-NI	-	79	M 10	69	M 28 x 1.5	40	-	-	59	10	70	DIN 1810-A40-42	755
GN 360-79-M10-86-B-NI	-	79	M 10	86	M 28 x 1.5	40	-	-	68	18	70	DIN 1810-A40-42	840
GN 360-52-M12-80-B-NI	52	-	M 12	80	M 36 x 1.5	52	-	-	69	11	85	DIN 1810-A52-55	897
GN 360-52-M12-103-B-NI	52	-	M 12	103	M 36 x 1.5	52	-	-	80	23	85	DIN 1810-A52-55	1460
GN 360-99-M12-80-B-NI	-	99	M 12	80	M 36 x 1.5	52	-	-	69	11	85	DIN 1810-A52-55	1498
GN 360-99-M12-103-B-NI	-	99	M 12	103	M 36 x 1.5	52	-	-	80	23	85	DIN 1810-A52-55	1645
GN 360-65-M16-112-B-NI	65	-	M 16	112	M 45 x 1.5	65	-	-	90	22	155	DIN 1810-A65-70	1758
GN 360-65-M16-148-B-NI	65	-	M 16	148	M 45 x 1.5	65	-	-	108	40	155	DIN 1810-A65-70	2145
GN 360-119-M16-112-B-NI	-	119	M 16	112	M 45 x 1.5	65	-	-	90	22	155	DIN 1810-A65-70	2980
GN 360-119-M16-148-B-NI	-	119	M 16	148	M 45 x 1.5	65	-	-	108	40	155	DIN 1810-A65-70	3360

